



PSCAD X4 Software Setup – Quick Start (Certificate Licensing)

1. Introduction

This document provides quick setup instructions for PSCAD™ X4 software, and is applicable for use with certificate licensing. For more detailed instructions, please refer to the user manual posted to this [article](#).

2. Scope Boundaries

The boundaries imposed for each edition (Professional and Educational) are specified in this [article](#).

3. Requirements

The following are required for this setup:

- [System requirements](#)
- Windows Administrator Privileges

4. Obtaining Access to the Software and Certificate Licensing

Obtain access to the certificate licensing as follows:

- a. [Register](#) a MyCentre user account if you do not already have one.
- b. Contact your organization’s WorkGroup Administrator to obtain access to the licensing.
Note: For a listing of your organization’s WorkGroup Administrators, please contact the MHI Sales Desk (sales@pscad.com).
- c. If you were provided a join code, [log in to MyCentre](#), and apply the join code as shown:



- d. Send an email using your facility’s e-mail domain the [MHI Sales Desk](#) requesting the software download.
- e. The software download and setup instructions will be provided to authorized users through their MyCentre user account. [Log in to MyCentre](#), and download the software from your *Downloads* tab.

5. PSCAD Installation Instructions

On the PSCAD machine, install PSCAD, as well as the GFortran compiler if required, as follows:

- a. Download the zipped file, extract (unzip) and save the files to your desktop.
- b. From the unzipped files, right-click on “setup.exe” and select “Run as administrator”.
The installation will launch.

- c. When prompted to select products for installation:
 - Select PSCAD
 - Select GFortran if you do not have a license for the Intel compiler (refer to Step 8 for information on selecting and setting up a compiler)
- d. When prompted to select the type of licensing, select “Certificate licensing”.

When the installation is complete, log out and log back in to your machine to apply the changes.

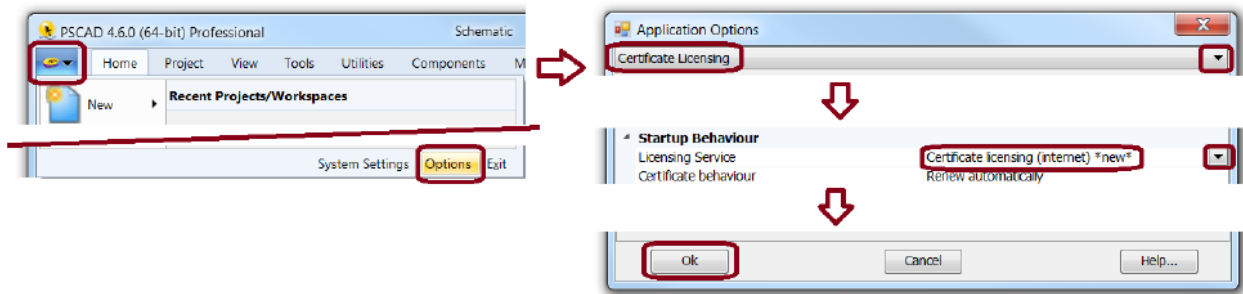
6. Launching PSCAD

Launch “PSCAD v4x” from the Windows Start menu.

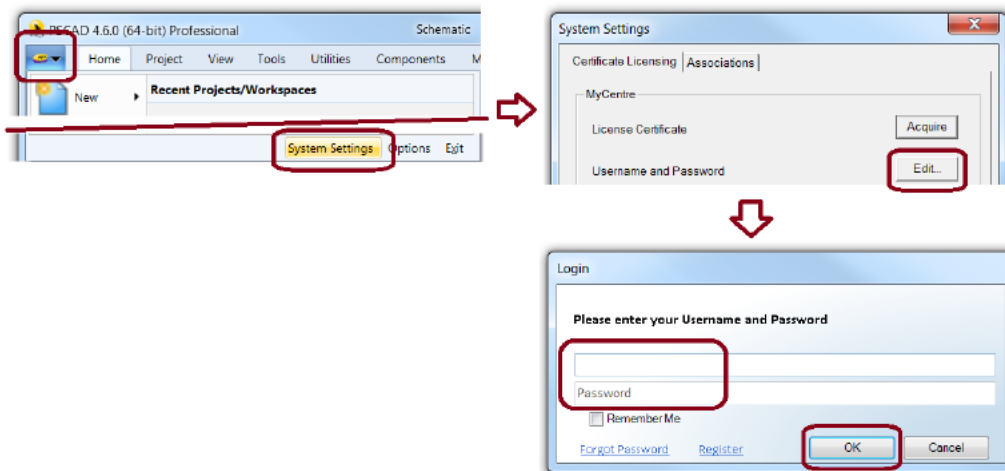
7. Activating a License

Activate the license as follows:

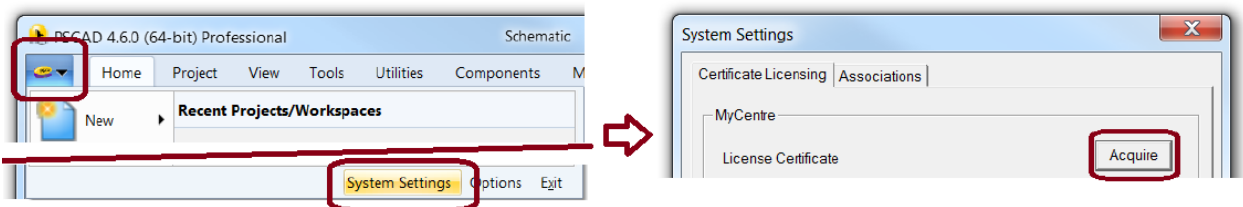
- a. Configure PSCAD for certificate licensing as shown:



- b. Use your MyCentre login credentials to log in to PSCAD:



- c. Activate a license to run PSCAD:





Note: If the user has access to multiple workgroups, select the preferred workgroup when prompted:

Name	Workgroup	Owned	Available
PSCAD 5.0 PRO	PSCAD PRO-5	5	2
PSCAD 5.0 PRO	PSCAD PRO-3	5	4

OK Cancel

- d. The software should now be licensed and available to use.
- e. Or, if license activation is unsuccessful, please contact our [support desk](#), and provide the "PscadCert.txt" log file:
C:\ProgramData\Manitoba HVDC Research Centre\LicenseManager\PscadCert.txt
- f. If multiple users will be sharing this license, the software should be configured to always return the certificate back to the server whenever it is closed as instructed in this [article](#).

8. Selecting, Setting up, and Testing your Compiler

A third-party compiler is required for building PSCAD projects. PSCAD supports the Free GFortran compiler that comes bundled with the PSCAD installer, as well as the commercially available Intel® Parallel Studio Composer Edition for Fortran for Windows. If using the Intel compiler, another third-party software is also required, Microsoft® Visual Studio. Refer to [detailed information on selecting your compiler](#).

GFortran may be installed alongside PSCAD as per Step 5.c, or it may be [installed separately from PSCAD](#).

For selecting and setting up the Intel compiler, please refer to the following references:

- [Selecting the Intel compiler version and license type](#)
- [Selecting the Visual Studio version and edition](#)
- [Setting up the software](#)

Once PSCAD and the compiler are installed, your setup should be [tested](#) before building your own projects.

If you have any compiler selection or setup questions, please forward your questions to our [support desk](#).

9. Resources for Using PSCAD

Resources for using this software are available in this [article](#).

We hope this information was helpful. If you have any setup or usage questions, please contact support@mhi.ca.