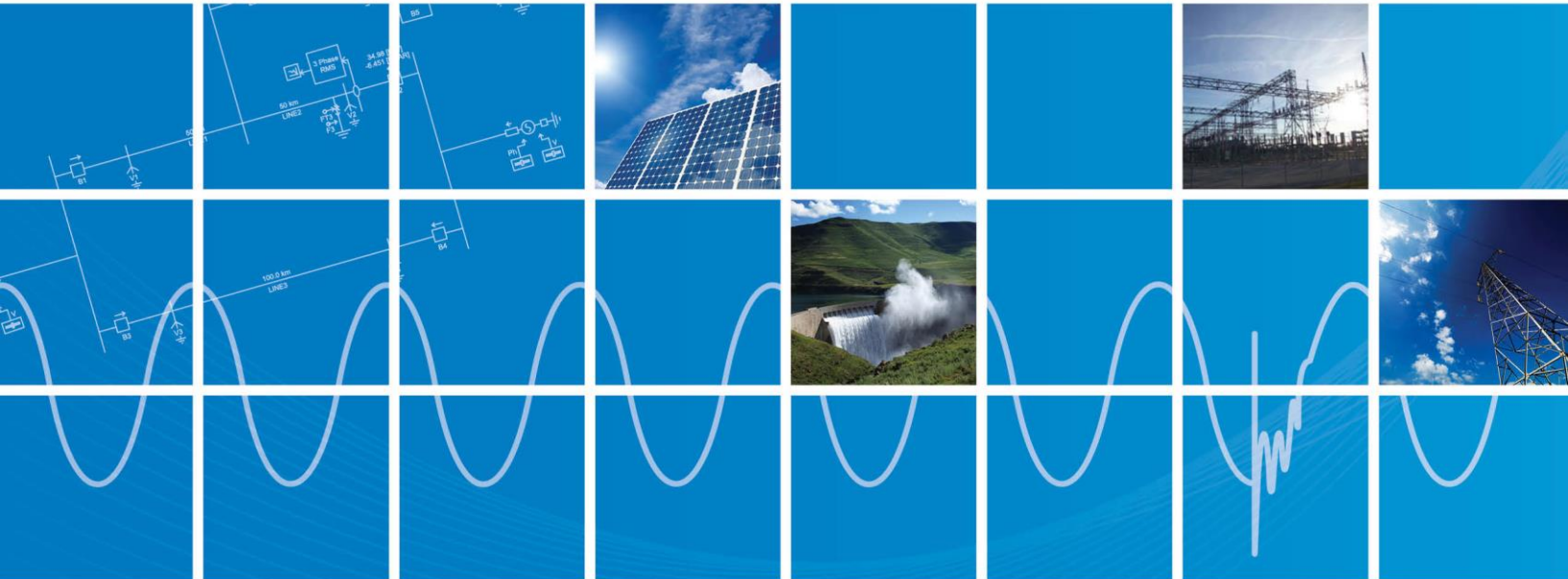


## Resolving PRSIM Issues

December 4, 2020  
Initial



**Contents**

<b>1.</b>	<b>INTRODUCTION .....</b>	<b>1</b>
1.1	OVERVIEW .....	1
1.2	RELATED SUPPORT DOCUMENTS .....	1
<b>2.</b>	<b>PRSIM USAGE ISSUES.....</b>	<b>2</b>
2.1	RECEIVING AN “COORDINATES SHOULD NOT EXCEED THE CANVAS SIZE...” ERROR MESSAGE .....	2

---

## **1. Introduction**

### **1.1 Overview**

This manual presents known issues and solutions related to using PRSIM. It is intended to be a continuously developing diagnostic tool as licensing evolves. If you encounter any issues that are not covered herein, please forward the details to our Support Desk ([support@mhi.com](mailto:support@mhi.com)).

### **1.2 Related Support Documents**

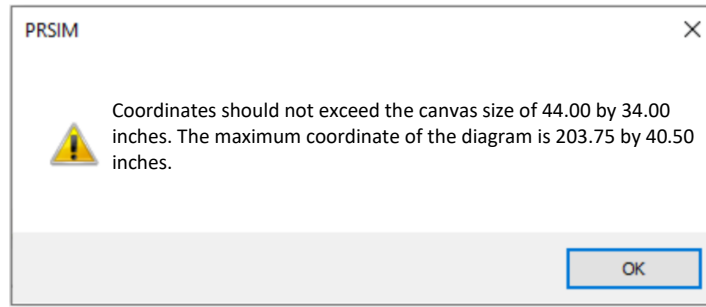
Refer to this [article](#) for other, related, support documents.

## 2. PRSIM Usage Issues

### 2.1 Receiving a “Coordinates should not exceed the canvas size...” Error Message

#### Problem

The following error displays:



#### Cause

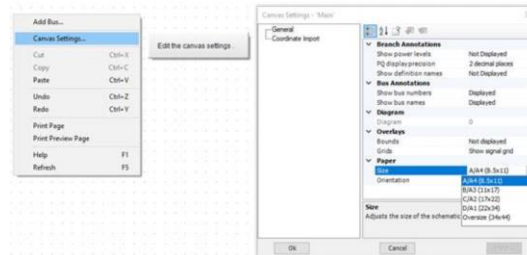
The PRSISM canvas size is limited to be consistent with the PSCAD canvas size, to maintain compatibility between PRSIM output and PSCAD input.

#### Solution (1) Select the Appropriate Canvas Size in Relation to the PSCAD Version

- Select the PSCAD target version, located on the “Home” tab:



- Select the corresponding canvas size:



#### Solution (2) Move Some of the System into a Subpage

Select part of your system, and push it into a subpage. This will free up some space to help display the rest of your system.

*Continued...*

**Solution (3) Move Some of the System into a Schematic**

Create multiple schematics for different parts of the network. Using this option results in multiple PSCAD cases that must be linked properly later on.

**Solution (4) Resize the System on the Loadflow Platform Canvas**

If the size of the networks allows, users may avoid relying on the subpage or schematic options by redistributing the system components on the PSSE or PowerFactory DIgSILENT canvas. This will allow reducing the required space for the case being loaded into PRSIM.

DOCUMENT TRACKING

Rev.	Description	Date
0	Initial	04/Dec/2020